

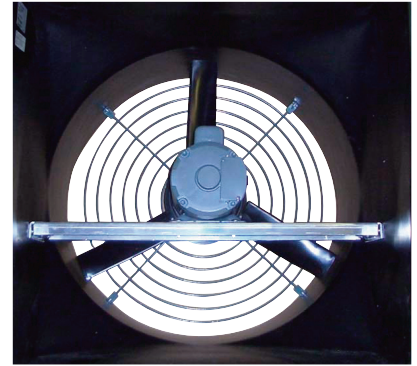
GOOD PERFORMANCE • DEPENDABLE • GREAT VALUE

IDEALLY SUITED FOR SWINE AND POULTRY BUILDINGS

NOW AVAILABLE WITH
EC MOTORS
for energy savings



PLATFORM MOUNT

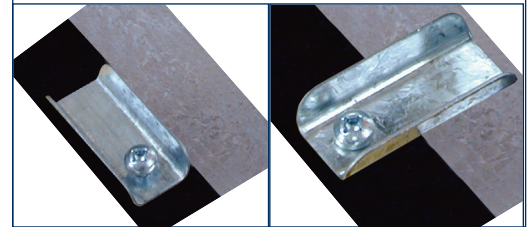
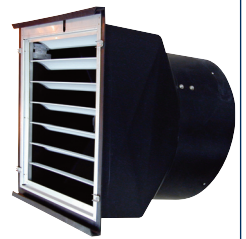


FEATURES

- 12" to 36" Sizes.
- Molded impact resistant black polyethylene housings with UV prohibitors.
- Standard base mount motors are easily replaced.
- Easy to remove shutter with welded steel frame and aerodynamic PVC louvers are held in place by a stainless spring steel pin and is virtually indestructible.
- Powder coated exhaust guard.
- Corrosion proof airfoil polypropylene blades on 12" to 24" sizes.
- 36" fan has a galvanized blade.
- Heavy duty motors are totally enclosed, ball bearing, high efficiency dual voltage, single phase, 60 Hz (PLF36-H is 230 volt only).
- Also available with EC motor.

EASILY REMOVABLE SHUTTERS

Flip latch open to release shutter



ACCESSORIES

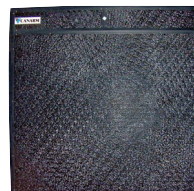
CONES

Performance enhancing cones in durable black polyethylene are available for 24" and 36" fans.



WINTER INSERTS

Insulated 16" to 36" winter inserts. R8 insulation value and unique double seal protect against heat loss.



HOODS

Low air restriction 12" to 24" weather hoods. Most hoods restrict 20 to 35% of air flow, our design restricts less than 10%.



WARRANTY

- 5 years on plastic housing
- 1 year on all other components

SPECIFICATIONS

	Specifications						Model	TESTED AT	Test Code	Performance							Rough Opening Required				
	Motor				Shutter Frame	Blade mat'l				rpm	DbA	Cone	0.00" SP		0.05" SP			0.10" SP		AFR	
	type	spd	volt	hp									cfm	cfm/w	cfm	cfm/w		amps	cfm		cfm/w
DIRECT	12"	Leeson	variable	1/4	Stainless Steel	Plastic	PLF12-EVDL		210336V	1625	65	N	1300	7.1	1150	6.5	1.06	600	3.6	0.30	15" Sqr
	16"	Leeson					PLF16-EVDL		210365V	1625	72	N	2600	9.3	2350	8.7	1.39	2150	8.0	0.54	19.25" Sqr
	18"	Leeson					PLF18-FVDL		210389V	1625	75	N	3450	10.1	3150	9.5	1.69	2900	8.7	0.65	21.25" Sqr
	24"	Leeson	115/230 dual voltage	1/3			PLF24-M		210473V	1100	75	N	5300	13.1	4800	11.9	1.79	4250	10.7	0.66	27.25" Sqr
		Leeson																			
	24"	Leeson	1/2	PLF24-GVDL				210461V	1625	81	N	5800	10.7	5400	10.0	2.41	4900	9.2	0.75	40.25" Sqr	
Leeson		210467V			Y	6200															
36"	Canarm	single	230	1.0	Galvanized	Galvanized	PLF36-MP		210557	850	75	N	11050	19.8	10150	17.0	2.92	9250	14.6	0.70	
	Canarm						210558	Y	11700												21.7
	Canarm							02198*	850	75	N	14320	14	13500	13.0	4.53	12500	11.9	0.79		
Canarm		02199*	Y	15920	16.4	15170	15.3	4.36												14100	13.8

Notes: AFR is the airflow ratio. Higher AFR indicates better performance under static pressure and against wind. It is calculated by dividing fan cfm at 0.20 static pressure by cfm at 0.05 sp.
 Test results are complete with cone where indicated. All tests completed with shutters installed.
 Amps indicated are actual at 230 volts. When determining amp load for variable speed, add 20% to listed numbers.
 Amp loads for 115 volt supply will be approximately double.
 * Certified performance by BESS Labs, University of Illinois



Note: Wind has a significant effect on exhaust fans. A 10 mph wind creates a 0.05" pressure against the fan. A 20 mph wind creates 0.20" pressure and 30 mph a 0.45" pressure. These pressures are in addition to the static pressure in the building. Wind blocks or hoods should be included in all designs where fans will be subjected to winds above 10 mph.

GUARANTEED PERFORMANCE

Canarm guarantees the performance of our fans. All fans with test numbers will perform as indicated when properly maintained (reports are available upon request). Our fans are tested in our AMCA fig 15 test chamber. The test chamber was designed and built to exacting AMCA/ASHRE standards for Canarm. A regimented calibration and verification schedule is followed. Be assured, Canarm fans provide the performance you require and expect.

THE FIRST AND ONLY MOTOR OF ITS KIND IN THE AGRICULTURAL INDUSTRY

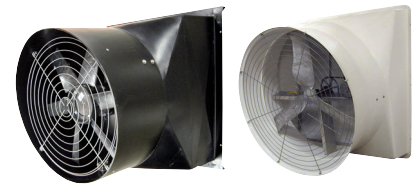
Our ECsmart Motor is an Electronically Commutated Motor. EC motors are electric motors that have permanent magnets on the rotor and use electronics to control the voltage and current applied to the motor.

Canarm brings you our latest innovation - the ECsmart motor featuring patent pending electronics. The result is an ENERGY EFFICIENT motor that runs COOLER than any other in the industry.



FEATURES

- The First EC motor that can be varied with existing 0-10v signal.
- Provides feedback for ventilation management.
- Can be retrofitted in any existing fan.
- Can be controlled by existing controls.
- Testing has confirmed power savings of 25-75%.
- ECsmart motors run cooler, virtually eliminating winding failures and increasing lifespan on the motor.
- Tested at BESS labs in our PLF and FG series fans.



PLF & FG models now available with EC motors.
See back page for details.

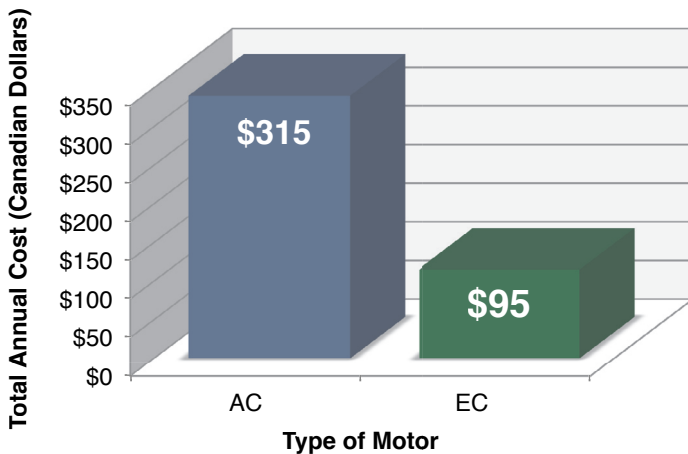
WARRANTY

Comes with a FULL 5 YEAR warranty.

EC VS. REGULAR MOTOR

Cost Savings (running at 60% speed)

Results show cost savings of a typical 24" fan using a regular motor vs a 24" fan using the ECsmart motor over a period of 365 days.



	FULL SPEED	60% SPEED
Typical AC Motor	536 W	324 W
ECsmart Motor	462 W	98 W
Input Cost of kWh	\$0.19	\$0.19
Input # hours per day	14 hrs/day	14 hrs/day
Total Annual Cost AC Motor	\$520.40	\$314.57
Total Annual Cost ECsmart Motor	\$448.56	\$95.15
Annual Savings by switching to ECsmart	\$71.84	\$219.42

Costs shown in Canadian dollars



PLF-EC SERIES

- Roto-molded impact resistant black polyethylene housings with UV prohibitors.
- Platform mount
- Easy to remove shutter assembly, complete with aerodynamic tie-bar poly louvers with stainless steel shutter frame and louver pin.
- Corrosion proof airfoil polypropylene blades on 12" to 24" sizes.
- Warranty: 5 years on plastic housing.
- Also available with our standard motor.

NOW AVAILABLE WITH
EC MOTORS
for energy savings



For complete product information, please see PLF Fans in Exhaust Fan section.

	Specifications						Model	TESTED AT	Test Code	Performance																Rough Opening Required	
	Motor				Shutter Frame	Blade mat'l				0.05"SP								0.1"SP									
	type	spd	volt	hp						Running @ 100%				Running @ 60%				Running @ 100%				Running @ 60%					
										rpm	cfm	cfm/w	amps	rpm	cfm	cfm/w	amps	rpm	cfm	cfm/w	amps	rpm	cfm	cfm/w	amps		
Direct	18"	Leeson	Variable	230	1/3	Stainless Steel	Plastic	PLF18-EC	16722	N	1850	3270	9.6	2.8	1004	730	11.5	0.60	1850	3000	9.2	2.7	1004	410	6.1	0.65	21.25" Sqr
	24"	Leeson			1/2						PLF24-EC	16725	N	1846	6390	9.6	5.06	983	2080	21.2	0.93	1846	6090	9.2	5.04	983	1230
Direct	36"	Canarm	Variable	230	3/4	Stainless Steel	Galvanized	PLF36-EC	16731	N	900	12850	14.3	6.56	564	6400	22.0	2.44	900	11530	13	6.46	564	4640	14.2	2.68	40.25" Sqr

FG-EC SERIES

- The patented design provides excellent performance without a cone.
- Chop & Spray design with smooth inside for improved cleaning and air flow.
- Self draining, sloped housing is quick and easy to clean reducing maintenance costs.
- All fans have smooth operating, easy to clean, tie-bar poly shutters with stainless steel frame.
- Platform mount.
- Corrosion proof airfoil polypropylene blades on 12" to 24" sizes.
- Warranty: 10 years on housings
- Also available with our standard motor.

NOW AVAILABLE WITH
EC MOTORS
for energy savings



For complete product information, please see FG Fans in Exhaust Fan section.

	Specifications						Model	TESTED AT	Test Code	Performance																Rough Opening Required	
	Motor				Shutter Frame	Blade mat'l				0.05"SP								0.1"SP									
	type	spd	volt	hp						Running @ 100%				Running @ 60%				Running @ 100%				Running @ 60%					
										rpm	cfm	cfm/w	amps	rpm	cfm	cfm/w	amps	rpm	cfm	cfm/w	amps	rpm	cfm	cfm/w	amps		
Direct	18"	Leeson	Variable	230	1/3	Stainless Steel	Plastic	FG18-EC	16729	N	1400	3330	10.8	2.5	820.0	780	12.6	0.59	1400	3110	10.4	2.5	820.0	560	8.8	0.61	24.75" Sqr
	24"	Leeson			1/2						FG24-EC	16727	N	1250	5660	8.9	4.77	652	1870	22.5	0.82	1250	5360	8.7	4.61	652	1090
Direct	36"	Canarm	Variable	230	3/4	Stainless Steel	Galvanized	FG36-EC	16730	N	900	14940	16.5	6.56	564	7920	31.1	2.17	900	14060	15.2	6.69	564	6040	21.1	2.38	43" Sqr